

The Ashtons logo is displayed in white text on a dark blue rectangular background in the top right corner of the image. The word "Ashtons" is written in a clean, sans-serif font, with a green leaf-like graphic element integrated into the letter 'A'.

2 Lilac Avenue Appleton Roebuck YO23 7DH

£1,200 Per Month

2



1



1



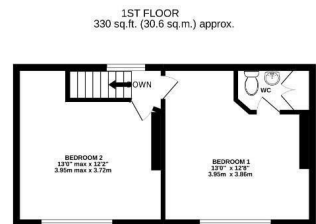
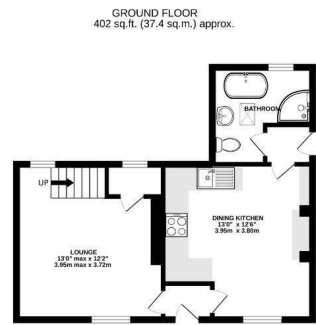
E



A lovely stone cottage tucked away in the village of Appleton Roebuck, offering country lifestyle within less than half an hour's drive of York City Centre. The property is offered on a furnished or unfurnished basis. Arrive into a cosy living room with ornamental fireplace, through to a kitchen well equipped with electric oven, hob, fridge freezer and washing machine, and dining nook with log burner. Ground floor house bathroom with roll top bath and separate shower. To the first floor are two double bedrooms, one with en-suite WC. On street parking

Available Now

Deposit £1300 / EPC Rating E / Council Tax Band C



TOTAL FLOOR AREA: 732 sq ft. (68.0 sq.m.) approx.
Whilst every effort has been made to ensure the accuracy of the figures contained here, measurements of plots, windows, doors and other items are approximate and no responsibility is taken for any errors or omissions. This plan is for illustrative purposes only and should be used as a guide only. Preparation and plan. The services, systems and appliances shown are not meant to be used as a guarantee or to be taken as a condition of sale. Plans with this sign (CMAA)



Ashtons Lettings

01904 731404

lettings@ashtonsnet.com

